

LX-BMS-U24-MD

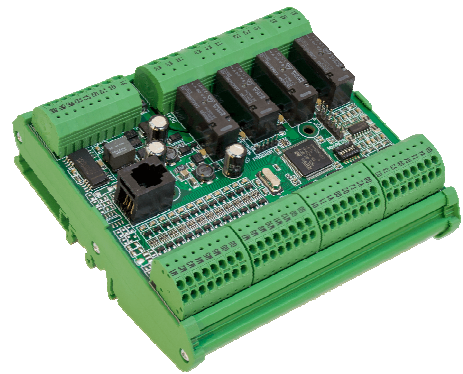
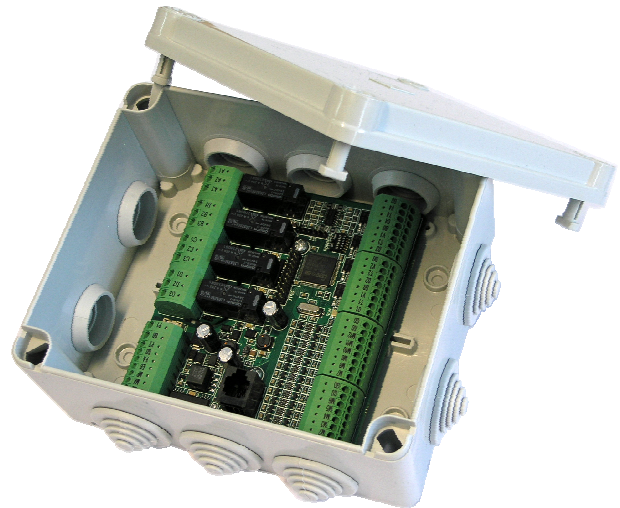
- Intelligent Unit Controller
- 12 Universal Inputs
- 4 Digital Outputs
- 4 TRIAC Outputs
- 4 Analogue Outputs
- Freely Programmable
- Detachable connectors
- Expansion with I/O modules
- Robust Single-Piece Design

LX-BMS-U24-MD UNIT CONTROLLER

The Lonix MD Series U24 Unit Controller, applying latest technologies, ensures advanced controls and versatile functionality in complex control systems, all included in a robust single-piece design.

The U24-MD is perfectly suited for lighting controls, room automation and unit controls, and is especially suited for controls of hotel guest rooms, office rooms and business spaces with fan coil units and split units. Having all the intelligence for complex controls as embedded in each controller, the U24 supports distributed intelligence and centralized system designs alike. The module's CPU runs its code independently, enabling swift and accurate reactions to changing measurements. The U24 uses the international standard IEC 61131-3 to program any application. The connectivity with COBA Building Operating System can be done via LX-BMS-NIU & LX-BMS-BIU or any Modbus Bacnet IP converter.

The controller can also simultaneously act as Modbus master for intelligent local sensors or operating panels, like the LX-BMS-TSP3.5-MD 3.5 inch touch screen with built-in temperature sensor. The controller can be easily expanded MD series I/O modules.



TECHNICAL DATA

Operating Voltage:	24 VDC / 16-26 VAC
Operating Temperature:	0-50°C
Network Interface:	Modbus RTU
UI:	12 Potential free contact or 0(2)-10 VDC, resistive sensors
DO:	230 VAC, max 6A
TRIAC:	PWM max 1A (for thermic drives)
AO:	0-10 VDC
IP Class:	IP20
Dimensions:	122 x 108 x 65 mm
Enclosure:	Non-flammable polystyrene, IP55
Mounting:	35 mm DIN rail (optional)
Connection Strips:	Removable, wire max 2,5 mm ²
EMC Compatibility:	Compliance according to EN 55022, EN 61000-4-3 and EN 61000-4-5
Production Standards:	ISO-9001, ISO-14001

LONIX LTD

Hämeentie 153 C, FI-00560 Helsinki, Finland
Tel: +358 9 349 9853, www.lonix.com

ORDER CODES: LX-BMS-U24-MD (DIN-rail mount)
LX-BMS-U24-MD-C (with enclosure)